



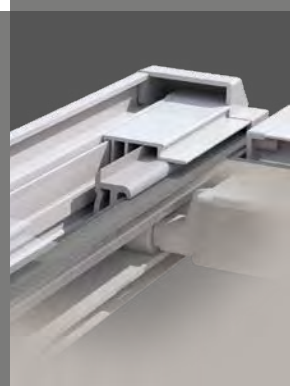
Rail system
Glass roof awning



Portofino
Interior

Just
enjoy life!

Lewens
MARKISEN



GDA
GESAMTVERBAND DER
ALUMINIUMINDUSTRIE e.V.
Aluminium-Profil-Award

GERMAN
DESIGN
AWARD
2022

if
DESIGN
AWARD
2022

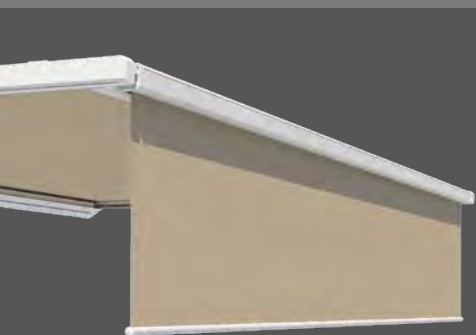


Enhanced comfort features

- Width, 1 unit max. 600 cm, double unit max. 1200 cm drop max. 500 cm
- Zip guide and patented balance spring technology
- Electric motor
- Options:
Radio motor/
radio remote control,
automatic weather sensor,
LED lighting,
radiant heater,
Vario valance

Portofino Interior type

Zip awning for glass roofs and conservatories



*When the sun is low in the sky, the optional **Vario valance** offers a sunshade and privacy screen that can be adjusted as required.*

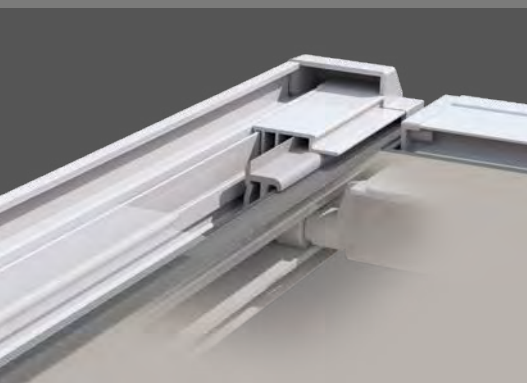
*Options for mood lighting:
an **LED strip** integrated into the cassette
and an **LED profile** that can be positioned
below the guide tracks.*





Smooth fabric and complete protection from the sun thanks to tracks with a lateral zip guide and patented balance spring technology

Perfect wall-to-wall shade for glass roofs and conservatories with no intrusive light slits at the sides – that is what the Portofino interior awning offers. The closed zip guide of the awning with patented balance spring technology ensures that the awning is always taut. Options such as radio remote control, LED lighting and a Vario valance provide added convenience and enhanced comfort.



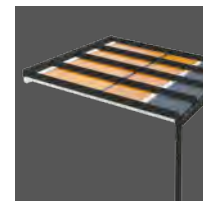
Fabric guide **ZIP**

The track systems, which have received recognition with the GDA Aluminium Profile Award, are equipped with a zip guide and patented balance spring technology. These ensure a taut sit of the fabric and complete shade from the sun.



Portofino

Equipment and technical features



Manufactured and assembled
in Germany



Quality and technology
CE-compliant



Recipient of the
GDA Aluminium Profile Award

Recipient of the



Recipient of the



Type	Interior
Fabric guide	ZIP
System height <i>(incl. standard attachment)</i>	160 mm
Unit widths <i>(max.)</i>	
1 unit <i>(single field)</i>	600 cm
2-part <i>(double unit: 2 cassettes, 2 motors, 4 guide rails)</i>	1200 cm
Drop <i>(max.)</i>	
Depth <i>(incl. cassette and pulley)</i>	500 cm
Drive	
Electric motor (for wall switch)	<input checked="" type="checkbox"/>
Radio motor (io)	<input type="checkbox"/>
Frame colours	
17 RAL colours + 6 textured finishes <i>(Lewens standard colours)</i>	<input checked="" type="checkbox"/>
Additional RAL, special colours and effect finishes	<input type="checkbox"/>
Awning fabrics <i>from the LEWENS collection</i>	
Branded acrylic <i>(spun-dyed, ultra fade resistant)</i>	<input checked="" type="checkbox"/>
Branded polyester <i>(spun-dyed, ultra fade resistant)</i>	<input type="checkbox"/>
Tenara quality sewing yarn	<input checked="" type="checkbox"/>
Options	
1 Radio motor + radio remote control (io)	<input type="checkbox"/>
2 Automatic weather sensor	Sun <input type="checkbox"/>
3 Lighting – integral LED strip, LED profile	<input type="checkbox"/>
4 Radiant heater <i>(only wall attachment)</i>	<input type="checkbox"/>
5 Vario valance <i>(not with 4)</i>	<input type="checkbox"/>
6 RTS solar radio motor <i>for Vario valance</i>	<input type="checkbox"/>
Attachment	
Interior fitting	<input checked="" type="checkbox"/>
Attachment materials	
Rail holders <i>(without assembly screws/plugs)</i>	<input checked="" type="checkbox"/>
additional/other attachment materials	<input type="checkbox"/>
Note	
<p><i>Due to the design and the weight of the awning fabric, the fabric may sag in the middle on large awning sizes. However, this has no effect on the operation and / or service life of the awning.</i></p>	

■ Standard □ Option

Possible dimensions and restrictions along with the complete range of electronic accessories can be found in the technical data in the current Lewens price list.

Your stockist will be happy to advise you:

Lewens
MARKISEN



www.lewens-markisen.de

Subject to technical alterations. Date: 06/2022