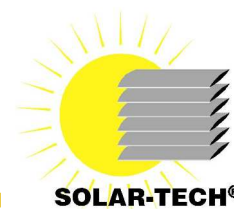
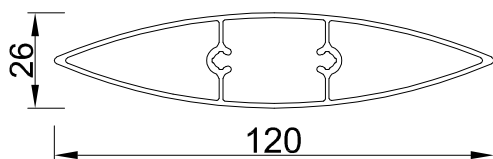


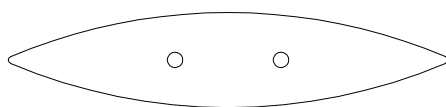
# Endcaps for ST 120



ST120

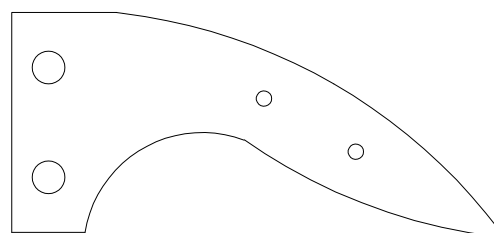


Simple endcaps



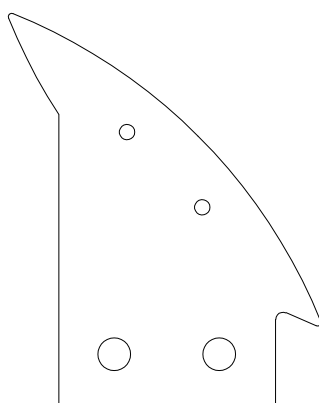
Angle endcaps (0-90°)

for mounting profiles in front of the supporting construction



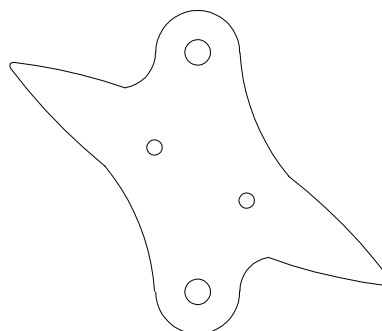
Angle endcaps (0-90°)

for vertical profiles in front of the supporting construction.



Angle endcaps (0-90°)

to install profiles in the axis of the supporting construction



MODIFICATION DATE  
08.2018