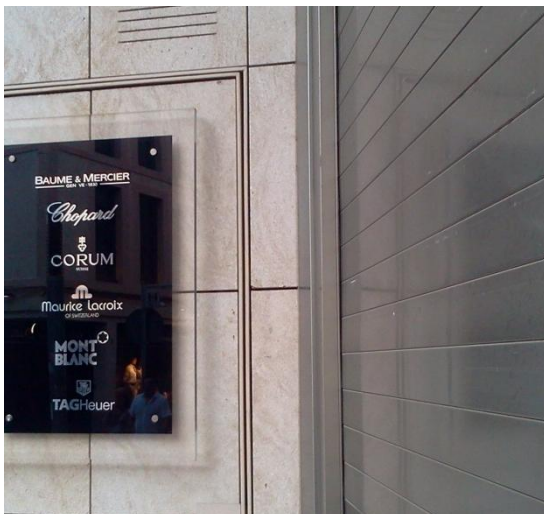




CERTIFIED SECURITY for your business



SECURBAIX model in Matt Silver anodized finish



SECURBAIX model in Shiny Silver anodized finish

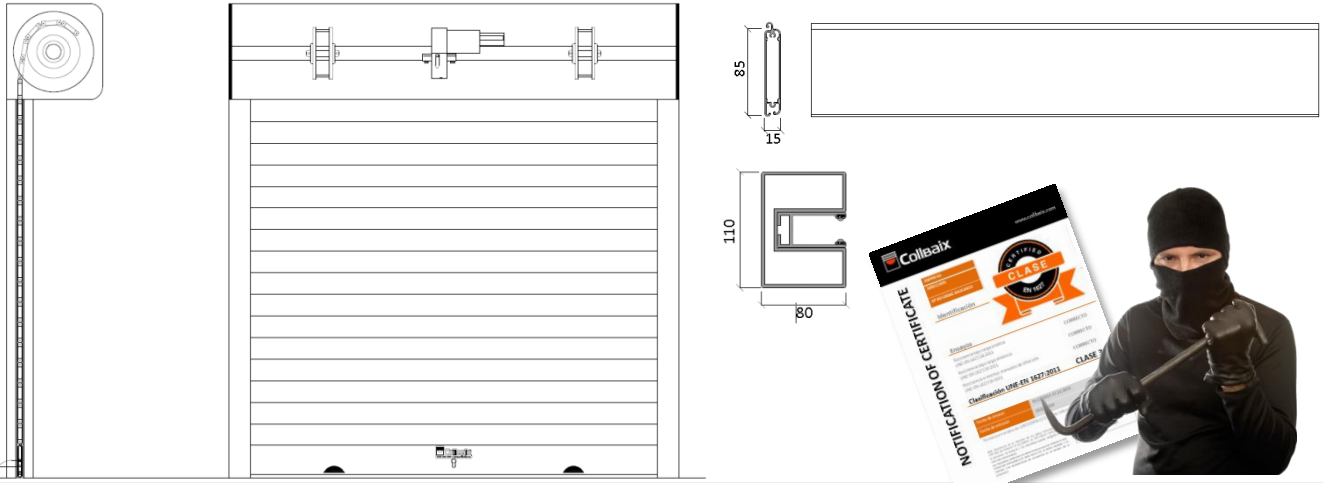
SECURBAIX

The SECURBAIX model has been specifically designed for buildings or stores where a higher level of anti-burglar protection is required.

This roller shutter has a very smart design, but remains functional and very safe. It has Resistance Class 3 (RC3) burglar-proof certificate according to the EN 1627 European standard.

It integrates an E-KEY MEMORY SYSTEM, an intelligent lock that prevents any harm to the shutter in case of accidental opening when the shutter is locked down.

SECURBAIX is suitable for jeweler's, banks, armories, museums, art galleries, antique shops or any other businesses. This is your best choice.



DESCRIPTIVE MEMORANDUM: SECURBAIX - BURGLAR-PROOF CLASS 3 – CERTIFIED EN 1627.

Roller shutter made of high resistance extruded aluminium, certified according to EN 13.241-1:2004 European standard on Security Shutters. Straight double-wall slats of 85x15x1.5, made of high resistance special alloy (Al, Si, Mg y Titanium). Anti-displacement patented system with stainless steel stoppers, reinforced, double-wall bottom slat of 120 x 1,5mm , EPDM sealing gasket and armored bearings. Guides with polyamide nylon to avoid friction. ALOJA DUET self-supporting guide of 110x80x3 mm + inner guide of 65x34x3 mm . Reinforced shaft in galvanized steel with stainless steel pulleys, bearings and nylon protectors, adapted to the dimensions and weight of the shutter. Suitable motor and electronic equipment for the dimensions of the shutter and the estimated number of operation cycles. E-KEY MEMORY SYSTEM (intelligent lock system to avoid harm in case of accidental opening of the shutter when the shutter is locked down), lateral lock and high security euro cylinder lock . ABS safety stoppers. Installation will be undertaken by COLLBAIX technical staff or authorized point of sale (P.O.S.)

PROFILES	High strength extruded aluminium, 6063 T5 alloy (Al, Mg, Si, Titanium) double wall slats of 85x15x1.5 mm.
FINISH	Lacquered RAL or Lacquered WOOD . European Seal of Quality QUALICOAT. ANODIZED : European Seal of Quality EWVA-EURAS
GUIDES	STRUCTURAL: ALOJA DUET guides (110x80x3 mm of thickness) Self-supporting guide. INNER: 65 Guide (65x34x3 mm of thickness) and nylon for minimal friction (with no greasing)
MEASURES/ WEIGHT	7.000 mm wide max (guides included) x 5.000 mm high max. Weight 10.8 Kg/m ² approx.
MOTOR / SHAFT	<u>0- 4.000 mm wide and 0-150 Kg</u> Reinforced shaft of ø 60 mm, pulleys of ø 220 mm with steel strips and nylon protectors. Single -phase central motor 220 V and electro brake – Maximum recommended operating cycles: 20 per day. <u>4.000 – 7.000 mm wide and 150-350 Kg</u> Reinforced shaft of ø 76 mm, pulleys of ø240 mm with steel strips and nylon protectors. Single-phase central bimotor 220 V and electro brake – Maximum recommended operating cycles: 20 per day.
LOCK AND AUTOMATISMS	Electronic equipment 220 V and operation at low voltage (12 V) Dead Man Operation. CE Standard.
OUTDOOR OPENING SYSTEM	SECURITY K LOCKER (located at frontal guide) / SECURITY K MINI LOCKER (lateral guide) – Stainless steel, security lock, emergency unblocking system in case of motor breakdown or power cut. Central Motor and digital keyboard.
INDOOR EMERGENCY SYSTEM	CONNEX V / CONNEX HOME selectors, with digital pushbutton, emergency stop and emergency unblocking system in case of motor breakdown or power cut.
MANHOLE COVER	It will be necessary and mandatory to make a detachable manhole cover at the bottom of the roll for its access and maintenance. The manhole cover must be 60 cm. wide through the whole length of the roller shutter.
ALUMINIUM UPPER BOX	Optional upper box DUETPLUS model, made of aluminium matching the colour of the shutter. This allows easy access to the roll for maintenance purposes.
PRODUCT STANDARDS	EN 13.241-1: 2004 <<Industrial, Commercial and Garage Doors, Gates>>. Policy of Building Products 889/106/EEC. Machinery Directive 98/37/CEE. Electromagnetic Compatibility Directive 89/336 EEC
WIND RESISTANCE	Class 2 (98 Km/h)
OPENING SPEED	0.2 m/s (approx)
THERMAL VALUES	U = 5,45 W / m ² K - Rt = 0,18 m ² K / W

Innovation for 40 years has made of Collbaix the leading company in the market. We have developed a dozen international patents exclusive by Collbaix. We produce with the best materials to provide the best guarantee for our customers.



1 ELEGANT DESIGN BOXES

With reinforced profiles and waterproof rubbers that reduce vibrations. They are more secure and do not distort when handled.

4 WE LOOK AFTER WHAT YOU CARE ABOUT

The new safety edge "Radio Sens" protects your family and your car. According to the European safety standard UNE 13241-1 CE.

7 REINFORCED PROFILES

Manufactured in a special high strength alloy that can be used for roller shutters up to 7 meters wide.

2 STAINLESS STEEL END STOPPERS

They will not break or rust and they will prevent the slats to get out laterally and to cause costly breakdowns (unlike other manufacturers).

5 "THE HEART" OF THE ROLLER SHUTTER

Collbaix uses Somfy motors only (world leaders). They are the most reliable motors: noiseless and made of high performance aluminium.

8 EXCLUSIVE SAFETY STOPPERS

They are made up of a special resin which do not rust or deteriorate. Their design is elegant and durable.

3 WEATHER PROOF SYSTEM

Tight joint that prevents annoying noises and scratches. It allows you to clean the door without passing water or air through it. Collbaix exclusive system.

6 HIGH SECURITY LOCKERS

Made of high resistance stainless steel with a rapid emergency system that protects the digital keyboard and unlocks the motor in both directions (inwards and outwards).

9 E-KEY MEMORY SYSTEM

Optional system that doesn't allow you to use the motor when the roller shutter is blocked.